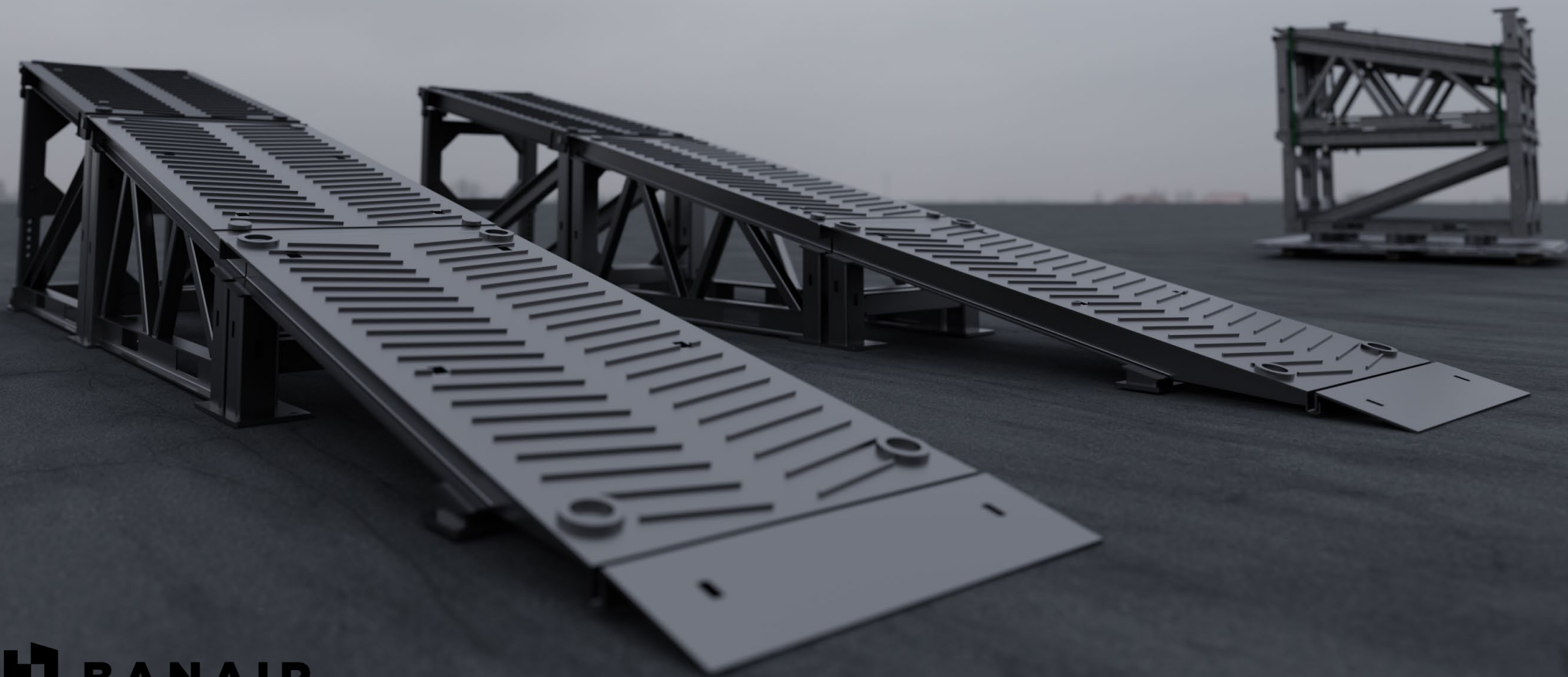


# MUDR - PD50

## INSTALLATION GUIDE



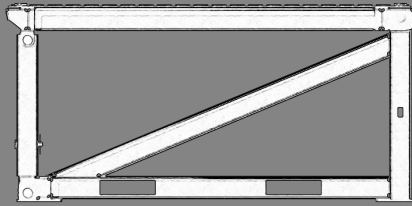
# MUDR - PD50

## INSTALLATION GUIDE

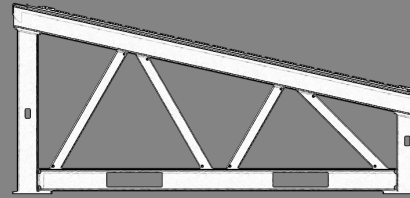
### OVERVIEW

#### 1 SECURED STACK

REFERENCE



RAMP SECTION 1  
(PLATFORM)



RAMP SECTION 2  
(INCLINE)



RAMP SECTION 3  
(TOE)

NOSE



Each stack is shipped and fully secured in preparation for deployment to the operation site.

IMPORTANT: DO NOT REMOVE OR TAMPER WITH ANY PART OF THE STACK BETWEEN REMOVAL FROM THE SHIPPING CONTAINER AND SITING ON THE 463L PALLET. EACH STACK INCLUDING THE 3 SECTIONS OF SECURED DUNNAGE, STRAPPING AND LOCKING MECHANISMS ARE PART OF THE SYSTEM AND SHOULD REMAIN IN PLACE UNTIL THE 463L PALLET, INCLUDING BOTH STACKS HAVE ARRIVED AT THE OPERATION SITE.

FAILURE TO COMPLY COULD RESULT IN INJURY OR DAMAGE TO THE PRODUCT

RAMP SECTION 3 - TOE

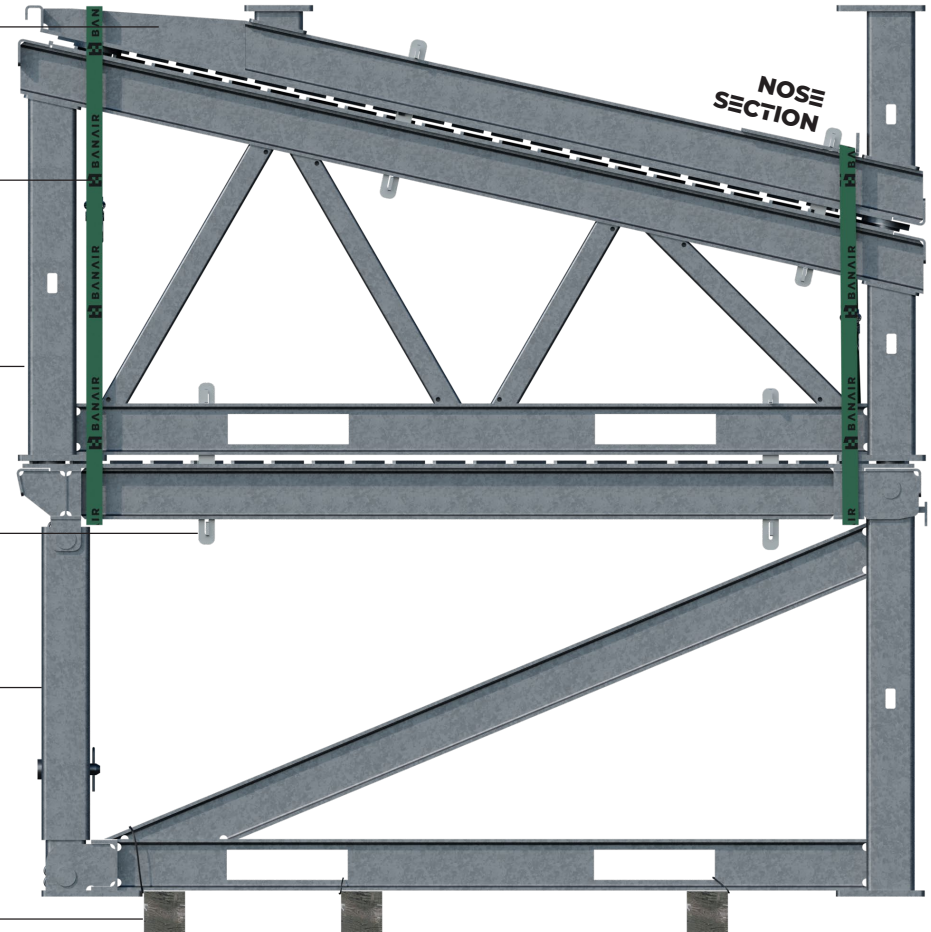
DUAL PURPOSE STRAPPING (SEE GUIDE)  
2 SECTIONS

RAMP SECTION 2 - INCLINE

LINKING PLATE AND LOCKING PIN SET  
8 POSITIONS

RAMP SECTION 1-PLATFORM

SUPPLIED DUNNAGE SECTIONS  
3 PER STACK-SECURED TO RAMP SECTION 1

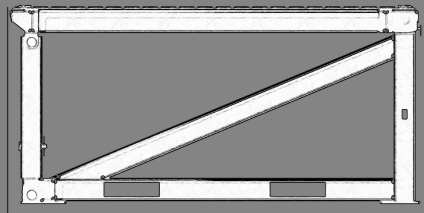


ALL COMPONENTS SHOWN AND LABELLED IN THE ILLUSTRATION ARE PART OF THE SYSTEM AND ARE INTEGRAL TO THE ASSEMBLY OF THE FINISHED RAMP.

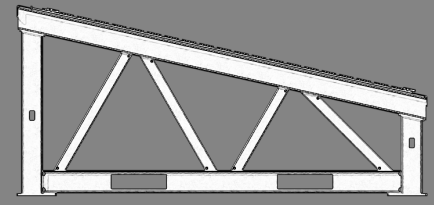
# MUDR - PD50 INSTALLATION GUIDE

## OVERVIEW 1 SECURED STACK

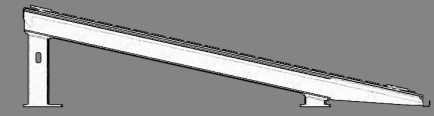
REFERENCE



RAMP SECTION 1  
(PLATFORM)

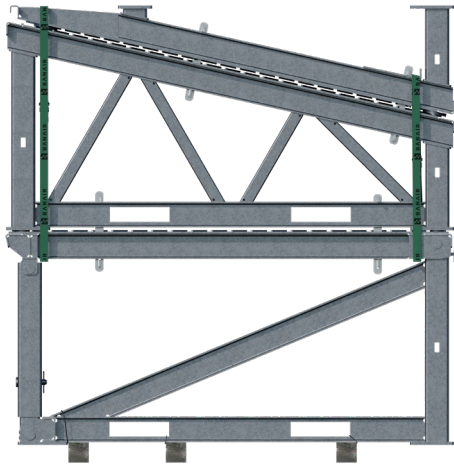


RAMP SECTION 2  
(INCLINE)



RAMP SECTION 3  
(TOE)

NOSE



Noseplate section weight  
TBC  
Though able to be positioned manually, caution is advised prior to lifting depending on capabilities of individual personnel.

## WEIGHT - LBS

**1433-LBS**  
(650KG)

**1268-LBS**  
(575KG)

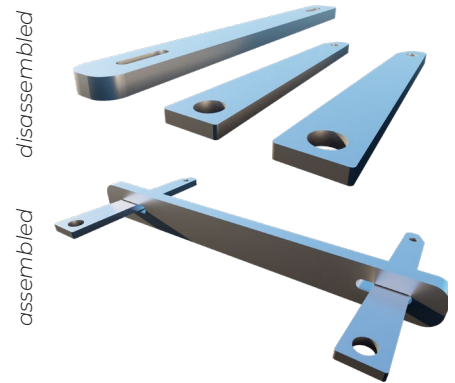
**882-LBS**  
(400KG)



4" x 4" x 40" DUNNAGE SECTIONS  
(3 per SECURED STACK)  
(comes cable tied to base of RAMP SECTION 1)



DUAL PURPOSE STRAPPING WITH RATCHET HOOKS  
(2 per SECURED STACK)  
(indicative image and may differ to actual items)



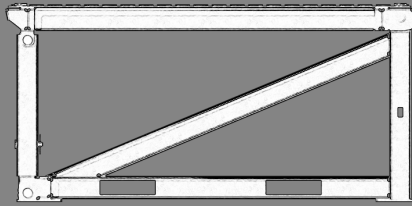
disassembled  
assembled

LOCKING PIN ASSEMBLY  
(8 per SECURED STACK)  
(1 x linking plate  
2 x locking pins)

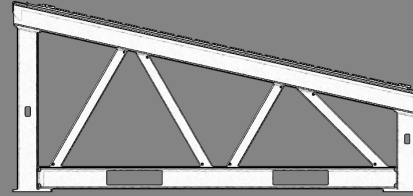


# MUDR - PD50 INSTALLATION GUIDE

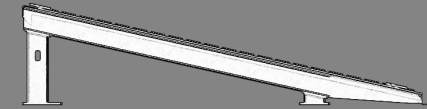
REFERENCE



RAMP SECTION 1  
(PLATFORM)



RAMP SECTION 2  
(INCLINE)



RAMP SECTION 3  
(TOE)

NOSE



THESE ITEMS ARE NOT INCLUDED BUT SHOULD  
BE ON SITE TO ASSIST ASSEMBLY



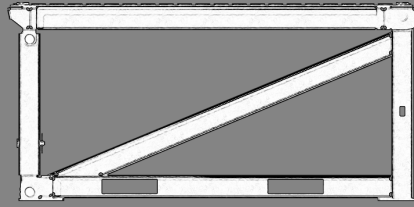
IMPORTANT: The information supplied within this document is intended as an indicative guide towards a successful installation. The process/sequence from shipped product, through to the removal and positioning of sections is correct at current time. However, the mechanical handling shown within the guide should ONLY be considered an indication of the section manipulation process and approached with the highest attention to safety with weights checked to ensure correct equipment is utilized.

- DUNNAGE/STRAPPING/FIXINGS/LOCKING MECHANISMS
- NOSE PLATE IS PLACED MANUALLY THOUGH MAY REQUIRE MORE THAN 1 PERSON

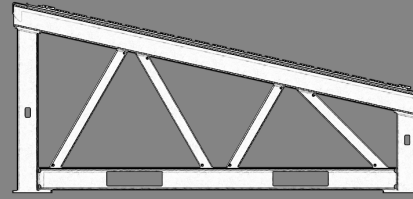
Doing so could result in injury and/or damage to the product

# MUDR - PD50 INSTALLATION GUIDE

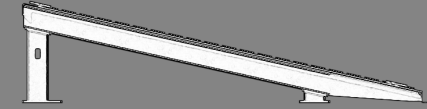
REFERENCE



RAMP SECTION 1  
(PLATFORM)

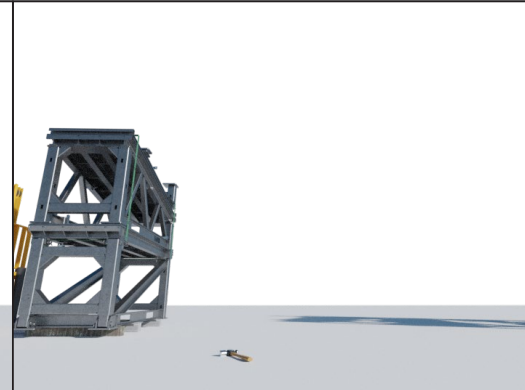
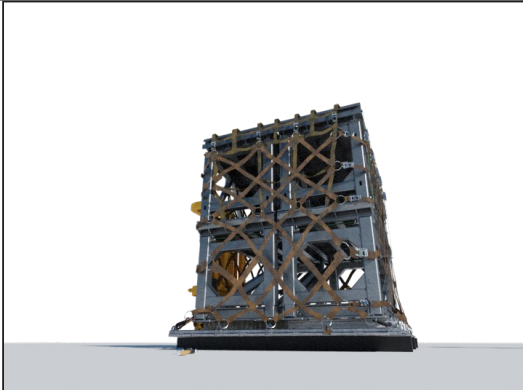


RAMP SECTION 2  
(INCLINE)



RAMP SECTION 3  
(TOE)

NOSE



## STEP 1.

The MUDR-PD50 ships on a single 463L pallet. Each pallet's load consists of

- 2 x full, 4 section ramp secured stacks
- Locking pin and plate assembly's
- Dual purpose ratchet lock strapping
- 6 x sections of 4" x 4" dunnage. (3 sections per secured stack and cable tied to base of RAMP SECTION 1)

Firstly, place the 463L pallet as shipped on preplaced dunnage by client.

It is recommended that the pallet be placed at the position where you expect MUDR-PD50's end section to be required. This avoids the need for additional or excessive site adjustment when the ramp is fully assembled.

## STEP 2.

Once sited in exact or close proximity of the operation site, remove all cargo strapping and securement.

**DO NOT REMOVE THE RAMP BINDING STRAPS OR LOCKING PIN ASSEMBLIES AT THIS POINT.**

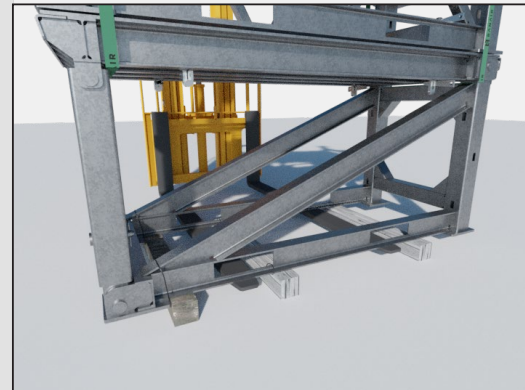
## STEP 3.

Remove ONE x 4 section ramp stack from the pallet and rest in parallel to the remaining ramp assembly. Final position adjustments can be made before removal of strapping.

The 3 sections of secured dunnage at the bottom of each stack allows for easy positioning adjustment with a pallet truck.

## STEP 4.

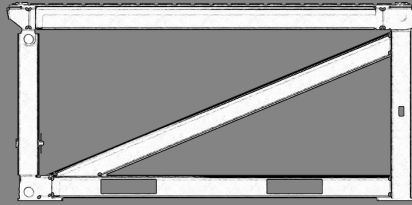
Lift the remaining MUDR-PD50 assembly and remove the 463L pallet and dunnage from the operation site. Place the ramp assembly in position.



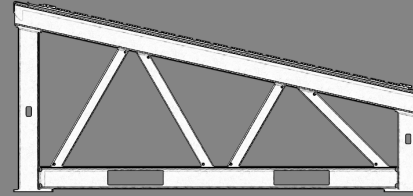
Remove the cable ties that secure the 3 sections of supplied dunnage to the base of RAMP SECTION 1 (both stacks)

# MUDR - PD50 INSTALLATION GUIDE

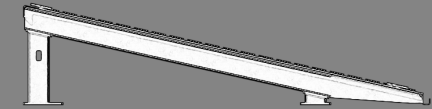
REFERENCE



RAMP SECTION 1  
(PLATFORM)

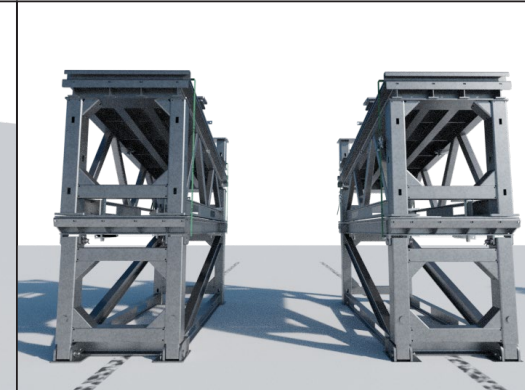
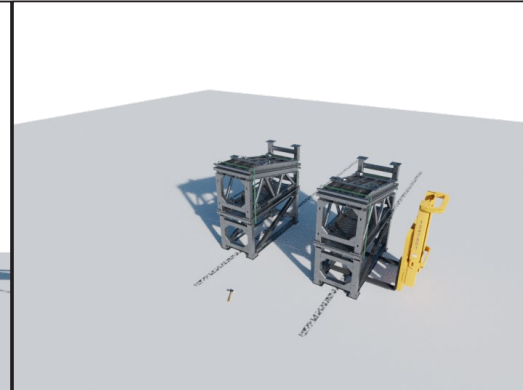
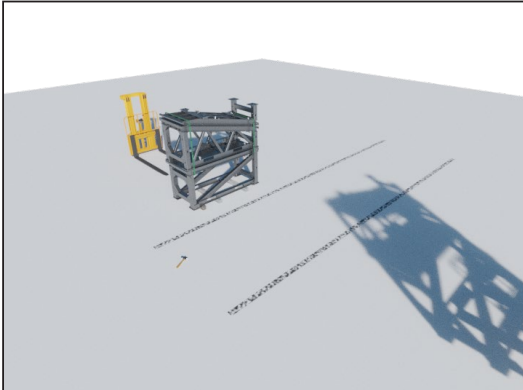


RAMP SECTION 2  
(INCLINE)



RAMP SECTION 3  
(TOE)

NOSE



STEP 5.

It is now advised to mark out on the ground, the required distance from centre to centre of the wheels on the vehicle that will be utilizing the MUDR-PD50 and position both ramps parallel with a distance between based on these dimensions.

STEP 6.

Once positioning details have been ascertained, place the first stack in the correct orientation on the centreline.

The orientation should be so that the locking bolts for the angle adjustment mechanism on RAMP SECTION 1 are at the end of the assembled ramp.

STEP 7.

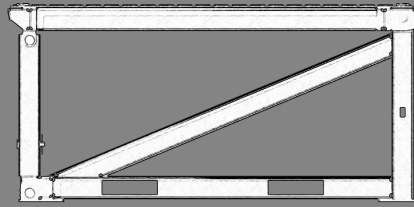
Ensuring the cable ties are again removed, place the second secured ramp section on the second centreline. Ensure they are completely in line with each other and parallel.

STEP 8.

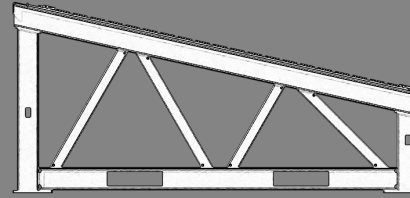
While adjustment to positions can be made later, it is highly recommended that any adjustments are made prior to the next stage.

# MUDR - PD50 INSTALLATION GUIDE

REFERENCE



RAMP SECTION 1  
(PLATFORM)

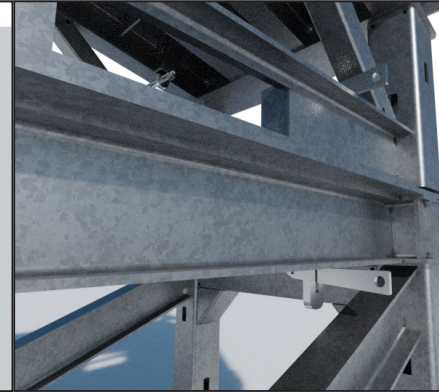
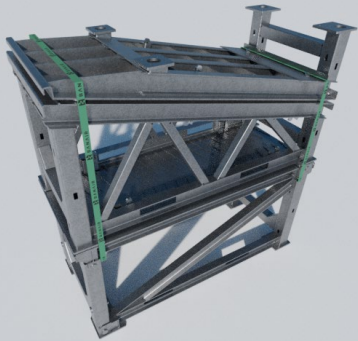


RAMP SECTION 2  
(INCLINE)



RAMP SECTION 3  
(TOE)

NOSE



**STEP 9.**

NOTE: THE FINAL RAMP POSITIONS/ALIGNMENT MUST BE RECHECKED ACCURATELY PRIOR TO USE AFTER ASSEMBLY IS COMPLETED TO AVOID POSSIBLE INJURY OR DAMAGE TO VEHICLE, ASSETS OR RAMP.

The MUDR-PD50 is now ready to assemble

**STEP 10.**

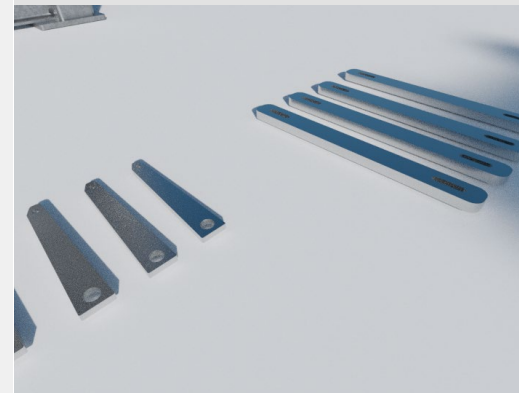
Remove the 2 sets of binding straps (shown vertically fitted on STEP 5).

Put the straps to one side as they will be utilized at a later stage.

**STEP 11.**

Next, locate the locking pin assemblies that secure RAMP SECTION 1 to RAMP SECTION 2. There will be 4 x assemblies, each one consisting of 2 locking pins and 1 linking plate.

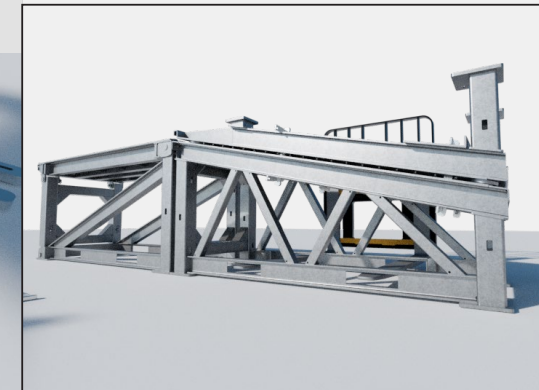
Remove these assemblies ONLY and retain for a later stage.



**STEP 12.**

RAMP SECTION 1 is now unlinked from RAMP SECTIONS 2/3/4. These sections remain locked together and are ready for the next stage of repositioning.

Lift the RAMP SECTION ASSEMBLY utilizing the fork pockets in RAMP SECTION 2.

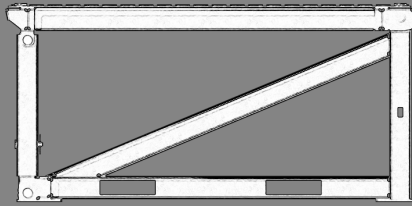


Position the ramp assembly and finely adjust final position so the footplates are butted and in line with the footplates of RAMP SECTION 1

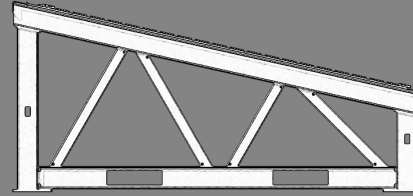
# MUDR - PD50

## INSTALLATION GUIDE

REFERENCE



RAMP SECTION 1  
(PLATFORM)

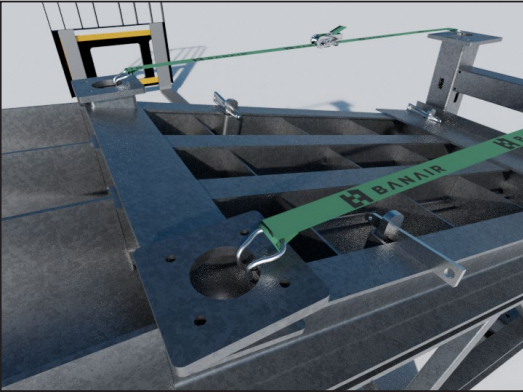


RAMP SECTION 2  
(INCLINE)



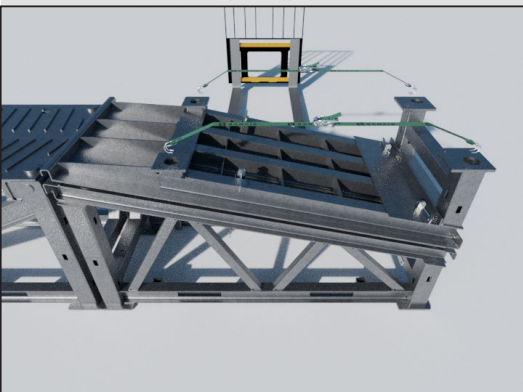
RAMP SECTION 3  
(TOE)

NOSE



STEP 13.

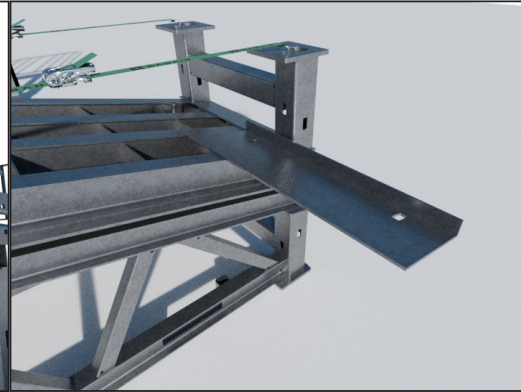
Take the 2 binding straps that were removed in STEP 6 and utilizing the holes found in the feet of RAMP SECTION 3, secure each end of each strap via the ratchets hooks. Once in place, tighten the straps so they are fully secure and unable to slip from position.



STEP 14.

Next, and as in STEP 7, locate the locking pin assemblies that secure RAMP SECTION 2 to RAMP SECTION 3. Again, there will be 4 x assemblies, each one consisting of 2 locking pins and 1 linking plate.

Remove these assemblies and retain for a later stage.



STEP 15.

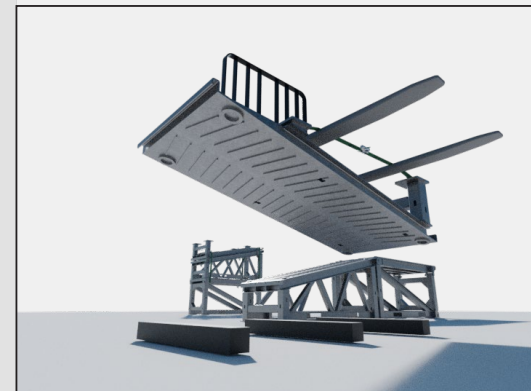
Removal of the locking assemblies from STEP 10 releases RAMP SECTION 4 (nose section) from RAMP SECTION 3.

Remove this section and put aside for a later stage.



STEP 16.

The secured binding straps from STEP 9 allow for RAMP SECTION 3 to be removed in order to resite towards final positioning.

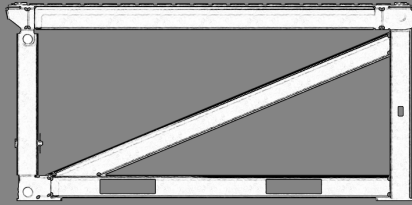


Place the supplied dunnage into position and manoeuvre your forklift so the orientation of the RAMP SECTION 3 has the nose position at the correct end in relation to RAMP SECTIONS 1 and 2.

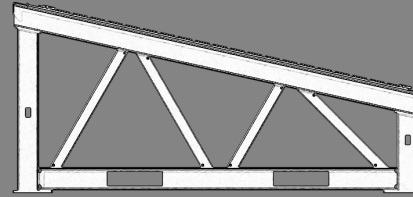
# MUDR - PD50

## INSTALLATION GUIDE

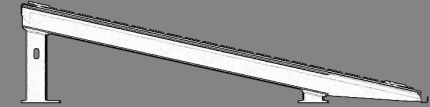
REFERENCE



RAMP SECTION 1  
(PLATFORM)

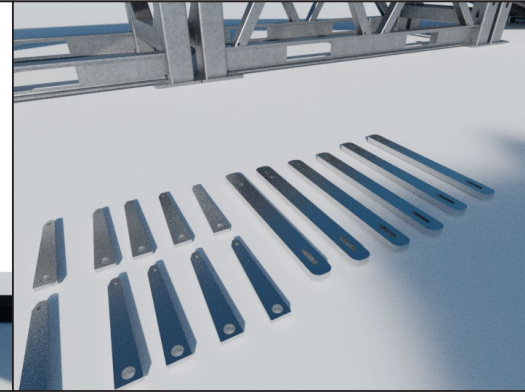
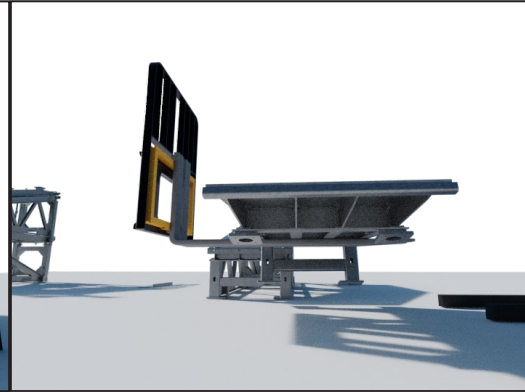
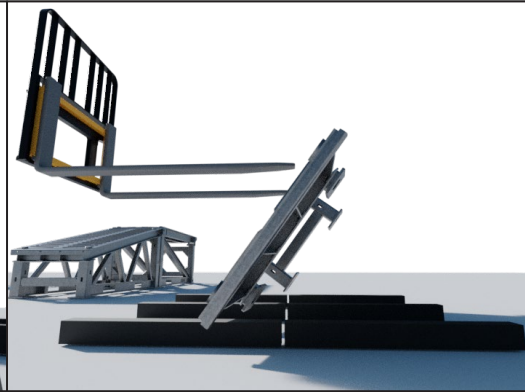
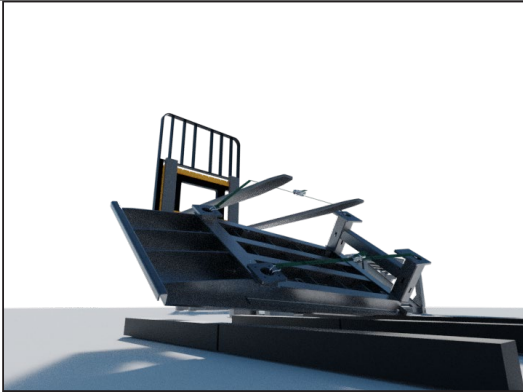


RAMP SECTION 2  
(INCLINE)



RAMP SECTION 3  
(TOE)

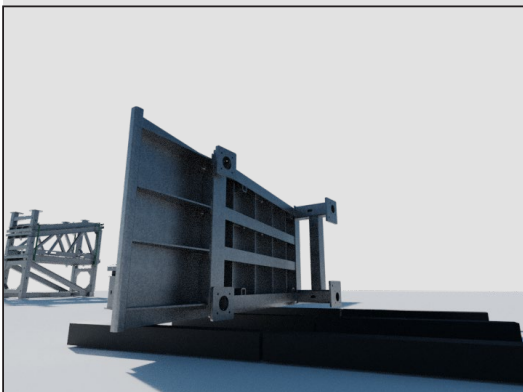
NOSE



STEP 17.

Once sited on dunnage, position your forklift so that the forks are in a position to interact with the nearside secured strap **ONLY**. Lift to allow RAMP SECTION 3 to tilt.

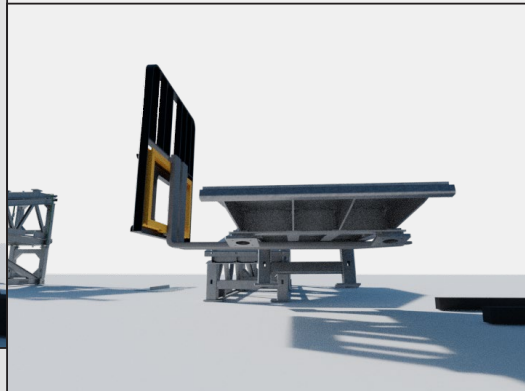
Once safely positioned on it's side, remove the straps, ready for final orientation.



STEP 18.

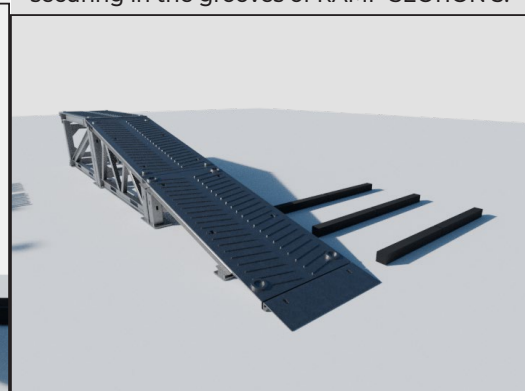
**IMPORTANT:** Refer to the weights of each section prior to any non mechanical handling of any of the RAMP SECTIONS.

Carefully use forklift to push, care must be taken to avoid damage to the ramp section. Wedges may be required to avoid sliding



STEP 19.

Adjust forks to narrow position, suitable for both forks to take into consideration the angle of RAMP SECTION 3 for lifting. Slowly pick up the ramp section, ensuring stability due to weight distribution. If any signs of tipping, resite ramp section and adjust forklift point of entry until stable when lifting. Finally, position the ramp so the footplates are butted and in line with the footplates of RAMP SECTION 2. Position the nose section, securing in the grooves of RAMP SECTION 3.



STEP 20.

Assemble all pieces that make up the locking pin assemblies removed earlier.

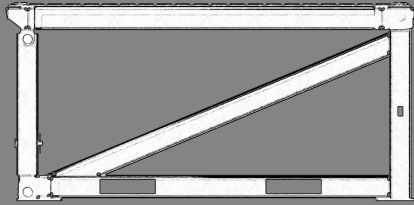
Ensure each ramp section is positioned as required, cross referencing the ground markings made at the start of the installation.

Any final adjustments should be made now and only if safe to do so.

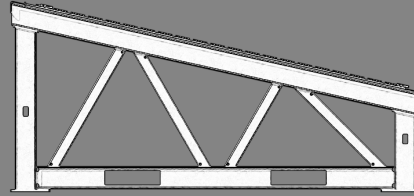
# MUDR - PD50

## INSTALLATION GUIDE

REFERENCE



RAMP SECTION 1  
(PLATFORM)

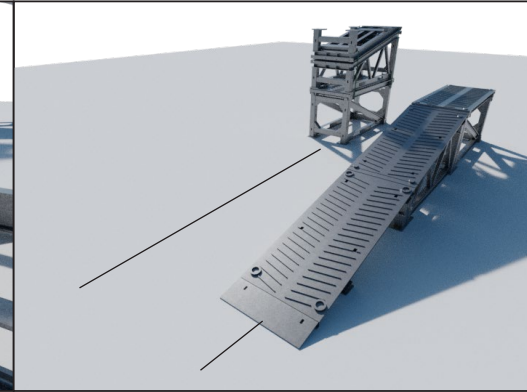
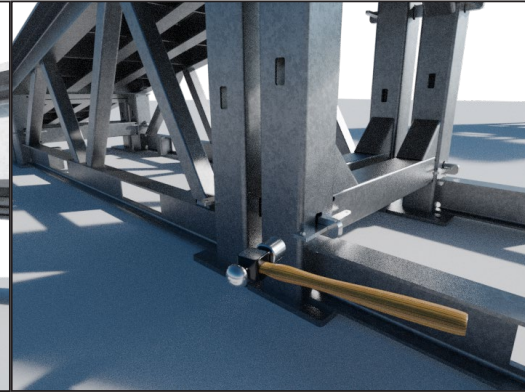
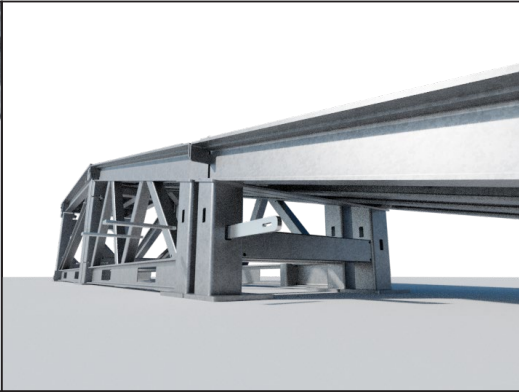
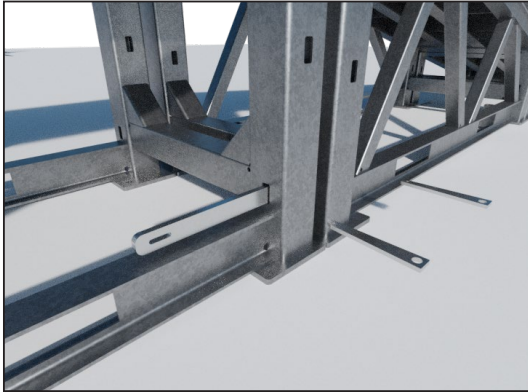


RAMP SECTION 2  
(INCLINE)



RAMP SECTION 3  
(TOE)

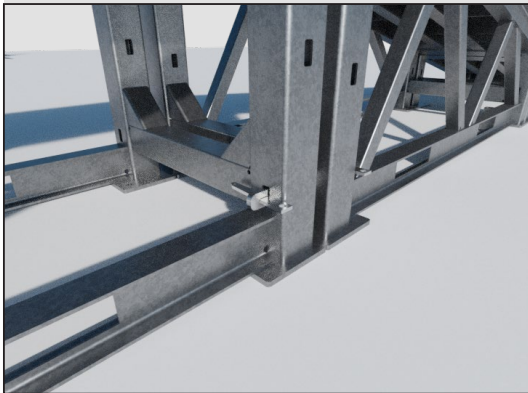
NOSE



STEP 21..

RAMP SECTION 1/2/3 must be secured before operating.

Take 1 linking plate and slide it through the leg holes in RAMP 1 then on through the adjacent holes in RAMP 2 so that the location holes at the end of each linking plate are visible.



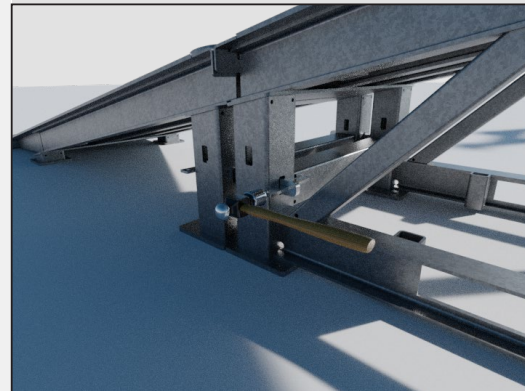
Loosely insert 2 locking pins into the visible linking plate holes.

STEP 22..

Repeat the process until each of the 6 areas are loosely secured with 1 linking plate and 2 locking pins.

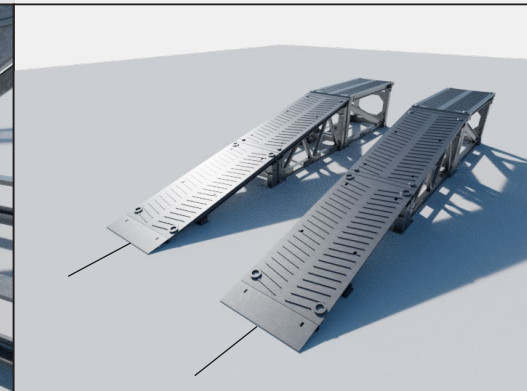
STEP 23.

Using a light duty hammer, gently tap the end of each pin until they are secured to a point where they will not drop from position. It is strongly recommended that the pins are checked regularly during operation to ensure they remain in position and secured.



STEP 24.

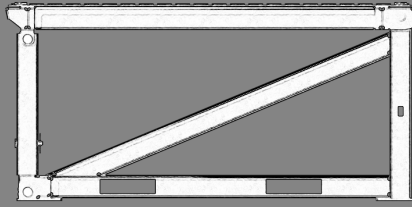
Repeat the process for the second ramp assembly. To avoid unnecessary and excessive repositioning when assembled, place the ramp stack on the centre lines marked out earlier and in parallel with the already assemble ramp.



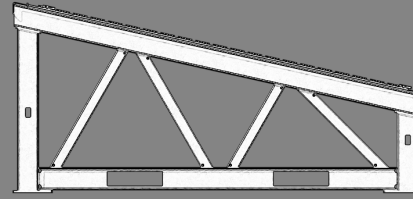
# MUDR - PD50

## INSTALLATION GUIDE

REFERENCE



RAMP SECTION 1  
(PLATFORM)

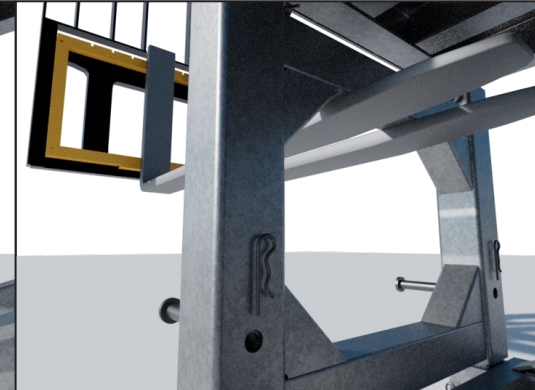
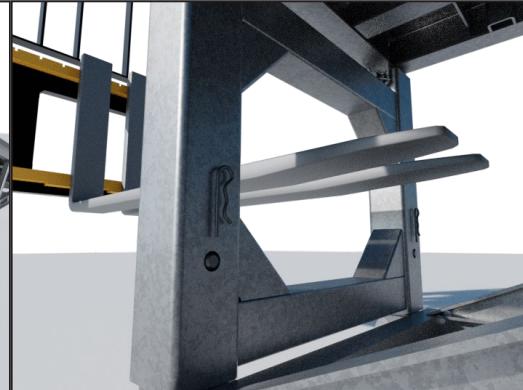
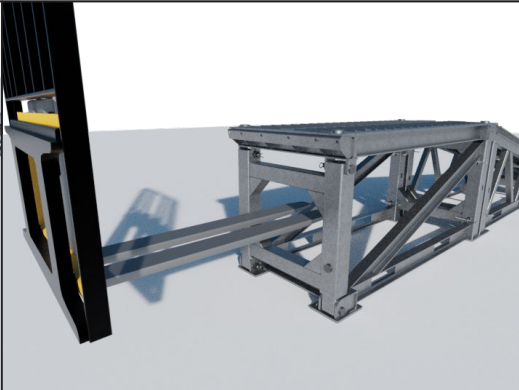
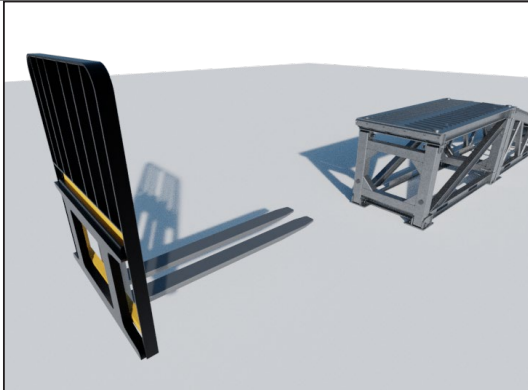


RAMP SECTION 2  
(INCLINE)



RAMP SECTION 3  
(TOE)

NOSE



STEP 25.

ANGLE ADJUSTMENT OF RAMP SECTION 1 (PLATFORM):

Adjust the fork positions so they are narrow enough to clearly enter the open section to the rear of the ramp beneath the upper box section, NOT THE LANDING AREA.

STEP 26.

Position the forklift so the forks are well within the internal section of the ramp to avoid any potential slipping during adjustment and securement.

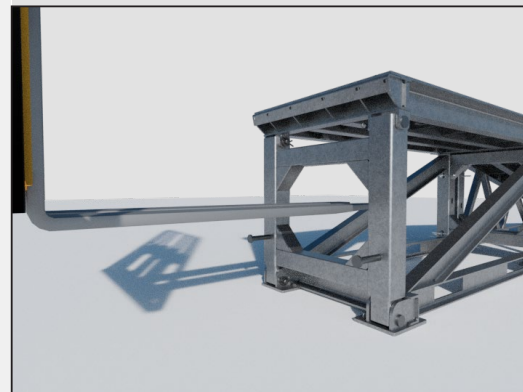
STEP 27.

When forks are in position, locate the 2 locking pins (both of which include a secondary pin to keep in place) and remove them from the ramp uprights. This releases the angle positioning mechanism for adjustment.

STEP 28.

With pins fully removed from position, clear personnel from area and slowly raise forks. Should there be any resistance, apply lubricant to any area that may assist clear movement.

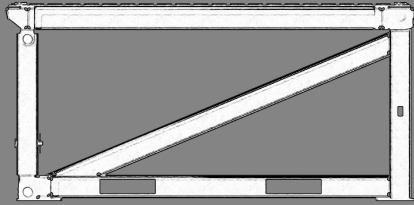
There are several locking position holes present towards achieving a suitable angle.



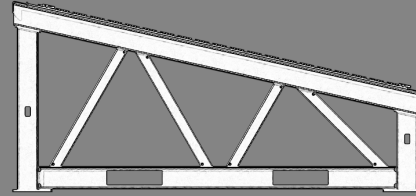
# MUDR - PD50

## INSTALLATION GUIDE

REFERENCE



RAMP SECTION 1  
(PLATFORM)

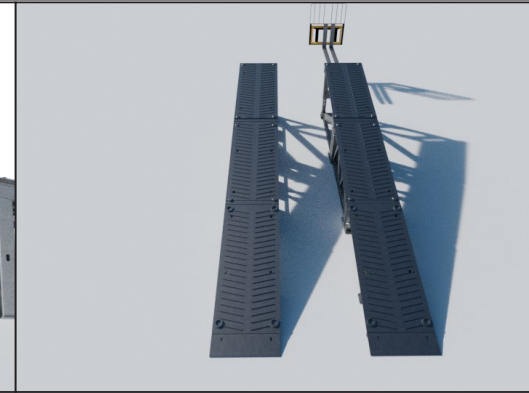
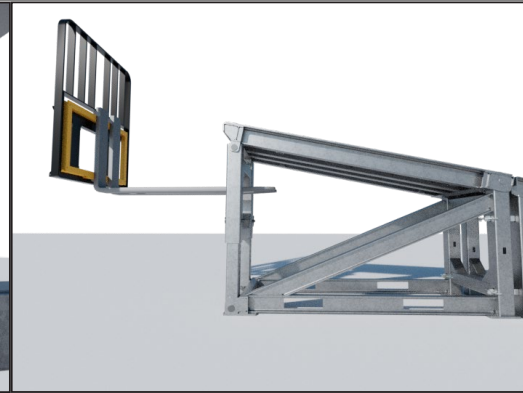
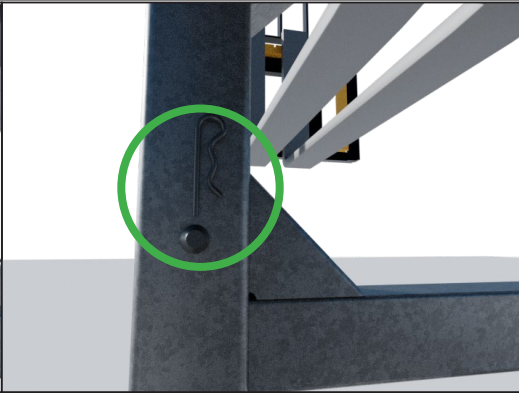
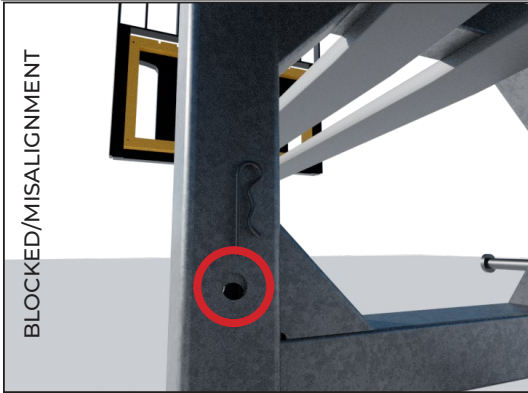


RAMP SECTION 2  
(INCLINE)



RAMP SECTION 3  
(TOE)

NOSE

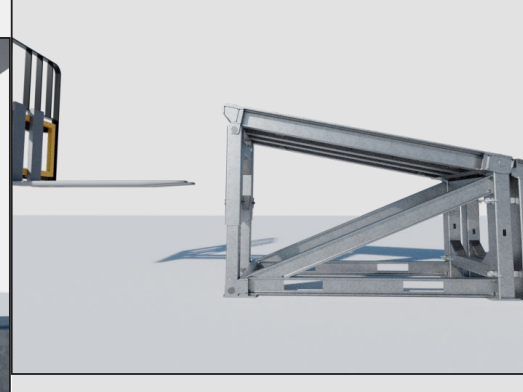
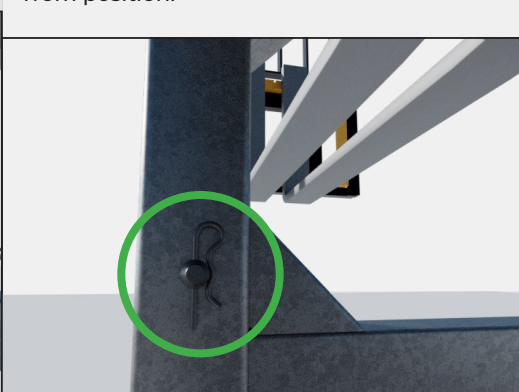
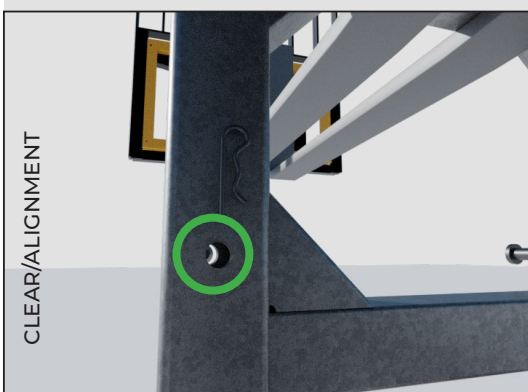


STEP 29.  
AT NO POINT DURING ADJUSTMENT SHOULD FORKS BE REMOVED FROM POSITION UNTIL LOCKING PINS ARE IN PLACE AND SECURE. PERSONNEL MAY BE REQUIRED TO RETURN TO CLOSE PROXIMITY OF ADJUSTMENT AREA TO ASCERTAIN WHEN A CLEAR ALIGNMENT FOR THE LOCKING PINS HAS BEEN REACHED.

STEP 30.  
DO NOT REMOVE OR REPOSITION FORKS OR FORKLIFT UNTIL THIS STEP IS COMPLETED AND PERSONNEL ARE CLEAR FROM AREA  
  
When required angle is reached and in correspondence with location hole alignment, replace both locking pins and secure with secondary pin to avoid slipping from position.

STEP 31.  
With both pins are secured area cleared, it is now safe to withdraw the forklift. Slowly lower the forks until clear and withdraw to a clear position in preparation to repeat the procedure with the 2nd ramp

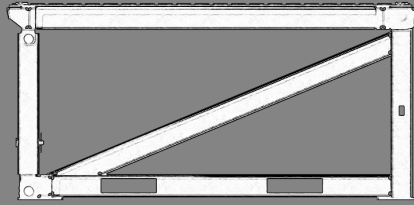
STEP 32.  
With pins fully removed from position, clear personnel from area and slowly raise forks. Should there be any resistance, apply lubricant to any area that may assist clear movement.  
  
There are several locking position holes present towards achieving a suitable angle.



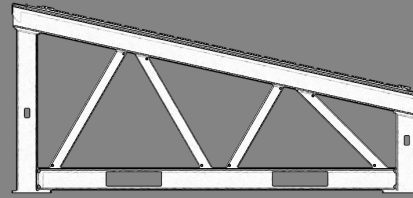
# MUDR - PD50

## INSTALLATION GUIDE

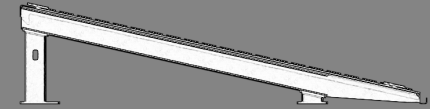
REFERENCE



RAMP SECTION 1  
(PLATFORM)



RAMP SECTION 2  
(INCLINE)



RAMP SECTION 3  
(TOE)

NOSE



### REPOSITIONING.

Should there be a requirement to adjust the centre to centre positions of the dual MUDR-PD50 assembly, it is not recommended to do so whilst fully assembled due to potential balance issues.

The safest procedure to avoid injury to personnel or damage to the product is to remove all locking pin assemblies and reposition each section individually, accordingly and in line with the adjacent/parallel positioning rules already covered within this guide.



[www.BANAIR.com](http://www.BANAIR.com)

+1 919 753 8429 (USA)

