

RACKBOX

STORE//DEPLOY//OPERATE



KEEP ASSETS ORGANIZED BACK HOME - AND ON THE MOVE

RACKBOX CONTAINER OUTFITTING SOLUTIONS

- A **unique** and **modular deployable** fully-functioning warehouse solution, engineered to fit perfectly inside a range of existing shipping container sizes.
- Allows users to **mobilize** quickly and efficiently and **maximize storage utilization** in deployable ISO/Military shipping containers
- Helps combine **maximum resources** of personnel and equipment to facilitate mobilization
- Allow the highest level of organization and security of mobilized assets

2 ASSEMBLE RACKBOX KIT INSIDE
Engineered & designed to fit perfectly inside the shipping container, maximising available storage space

Optional Integrated lights

Entire system protects assets on shelf at home and in transit

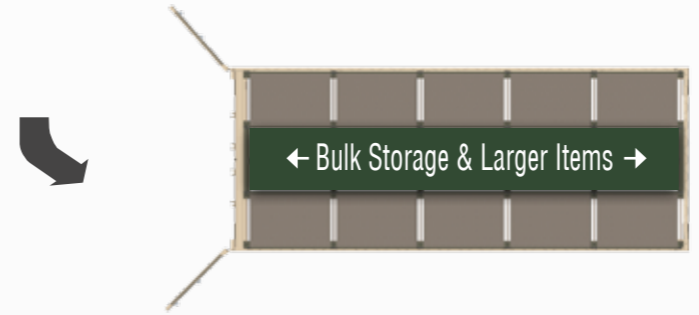
1 USE ANY EXISTING CONTAINER
Utilize your existing containers. Or Ban-Air can supply completely outfitted solutions



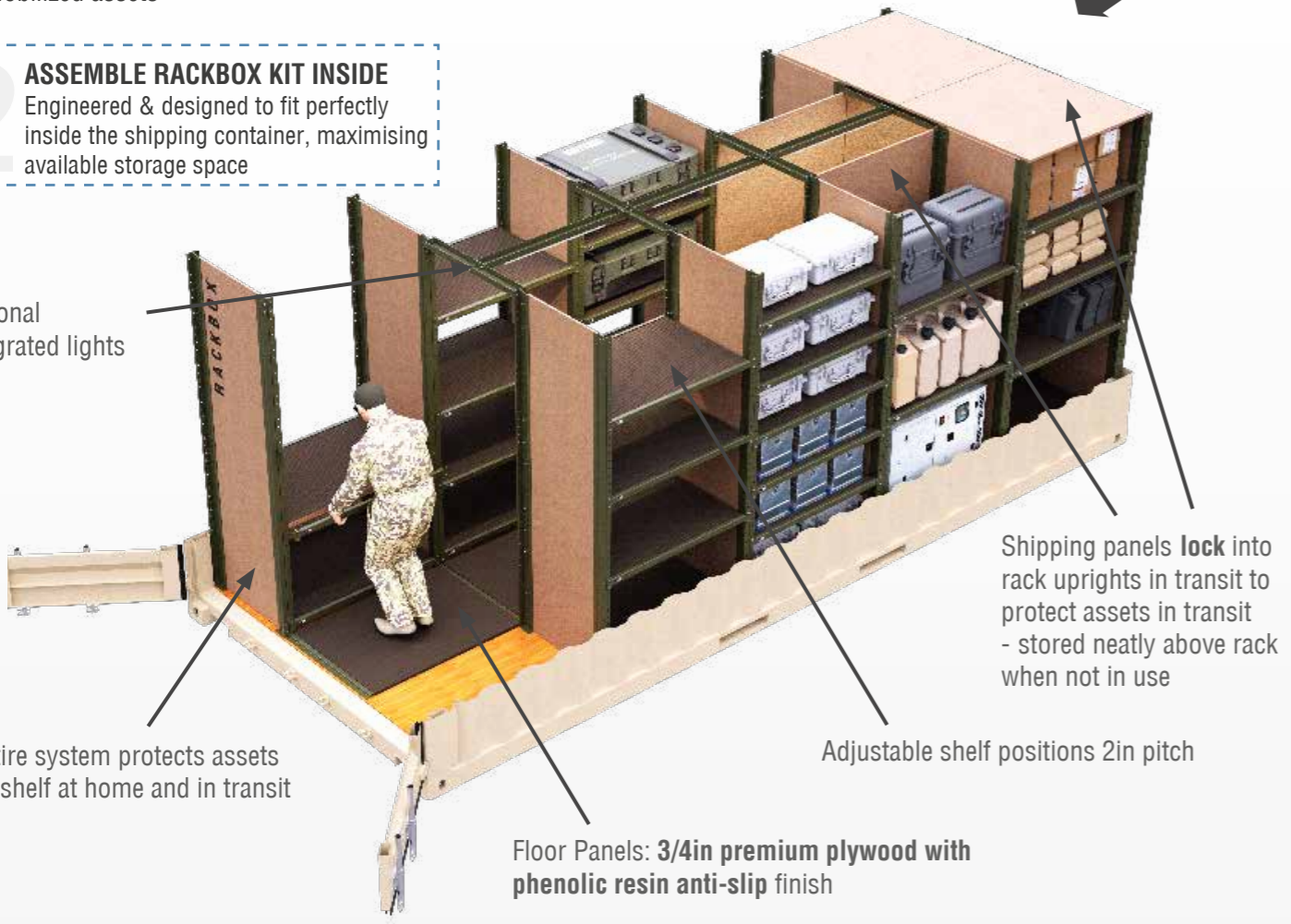
3 GET READY TO DEPLOY
Once your assets are organized & stored, simply fit the front panels onto each bay, lock in place.....and deploy.



4 UTILIZE AISLE SPACE FOR BULK STOCK
Our standard Rackbox leaves an aisle width of 2ft 6in + the length of container, allowing for bulk storage & larger items



5 DEPLOYABLE STORAGE FACILITY
Create large-scale storage & distribution facilities using multiple Rackbox container kits



RACKBOX SIZES

20' CONTAINER

INTERNAL DIMENSIONS (W / D / H):
7'-6" / 19'-2" / 7'-7" [IN]

BI-CON

INTERNAL DIMENSIONS (W / D / H):
7'-6" / 9'-2" / 7'-7" [IN]

TRI-CON

INTERNAL DIMENSIONS (W / D / H):
6'-2" / 7'-3" / 7'-7" [IN]

QUAD-CON

INTERNAL DIMENSIONS (W / D / H):
4'-4" / 7'-7" / 7'-7" [IN]

DEPLOYABLE
Rackbox kits allow you to **mobilize** quickly and efficiently and **maximize storage utilization**

ADJUSTABLE
Each shelf position can be **adjusted** every 2in allowing multiple configurations dependant on your needs

SECURE
Shipping Panels lock into the rack uprights, keeping your items **secure & safe** throughout transit

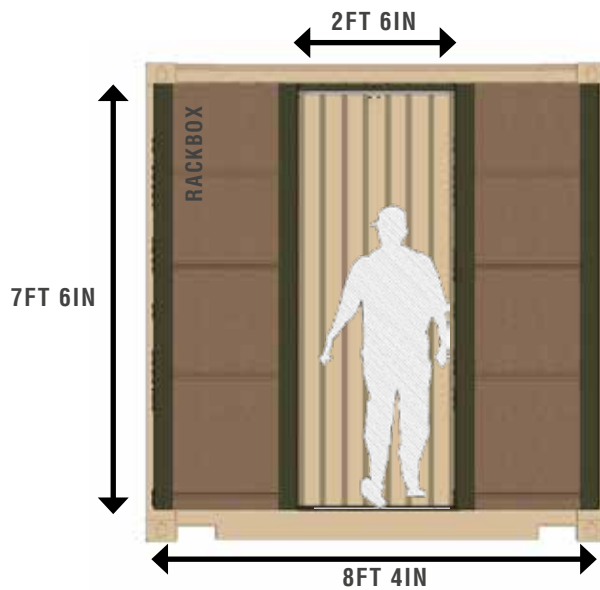
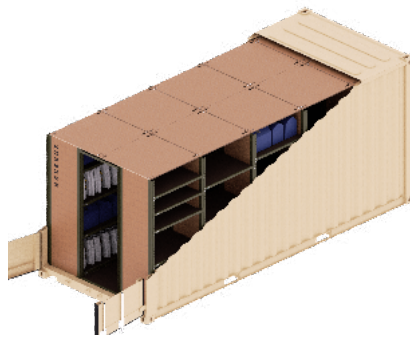
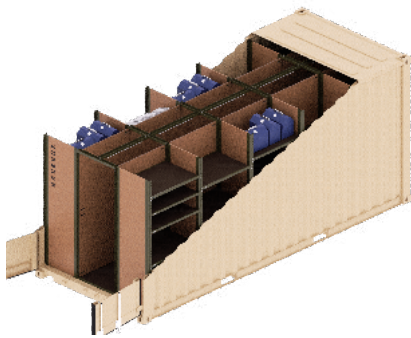




**READY
FOR
DEPLOYMENT**

**READY
FOR
USE**

**READY
MADE
STORAGE
FACILITIES**



WWW.BAN-AIR.COM
sales@ban-air.com

Elements Industrial Storage Ltd
Unit 3, Access Point Industrial Estate
Willenhall Lane, Bloxwich
WALSALL, West Midlands
WS3 2XN, United Kingdom

CAGE code: U16P0
DUNS number 221641829